



Architectural  
Diamond  
Rope  
Wire Mesh

# YHY Wire Mesh

**ADD: NO.268 SOUTHWEST INDUSTRYDISTRICT OF  
ANPING COUNTY, HEBEI, CHINA.053600  
TEL :0086-318-7859818 FAX:0086-318-7859618**

# Architectural Diamond Rope Wire Mesh

Architectural rope Mesh, also called rope wire mesh, similar to architectural expanded mesh and architectural ring mesh, is one type of the decorative wire mesh. Generally, the architectural rope mesh is made of stainless steel but aluminum is also available. It is a product made of high-quality raw material and weaved, stretched and stamped through a special process. It has a durable and simple grace and is a perfect combination of modern science

and art. Because of its unique flexibility and gloss, it is widely used in star hotels, cafes, shopping malls, villas, office buildings, museums, exhibition halls, cultural centers, stadiums, opera houses, flagship monopoly The facades, partitions, and ceilings of buildings such as shops are decorated inside and outside.

According to the formation of the metal architectural rope mesh, it can be classified into knot type, ferrule type, bead type and woven type. The formation of knot mesh is that two ropes are crossed together or weaved together. While the ferrule type mesh is that two ropes are combined by ferrules with different shapes which are often made of stainless steel. And the ferrule type is mostly used in the architectural project.



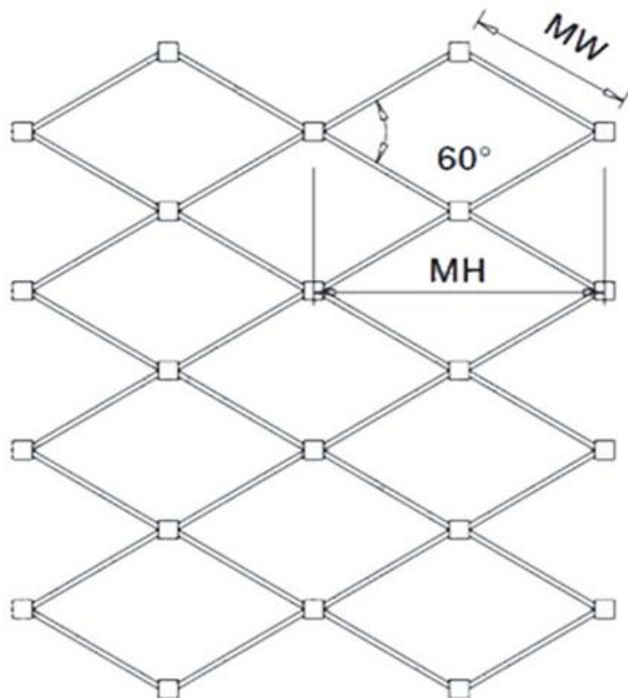


## FEATURE

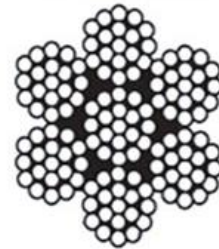
- The raw materials are high-quality stainless steel 304, 304L, 316, 316L wire rope and stainless steel buckle. Unique metal lines.
- Close to nature and green. Will not corrode and rust in different environments. Blend with the surrounding scenery.
- Never rust, fatigue resistance, impact resistance and large breaking force, the overall structure is sturdy and durable, the appearance is luxurious, the form is novel, and it is a big landscape in itself.
- Light weight, high strength, good flexibility, fatigue resistance, impact resistance, large breaking force, solid and durable overall structure, service life is more than 30 years;
- There is no restriction in design. The designer can design any size hole pitch.
- Convenient transportation, fast installation, and can be constructed in any environment and on any structure.

## SPECIFICATION

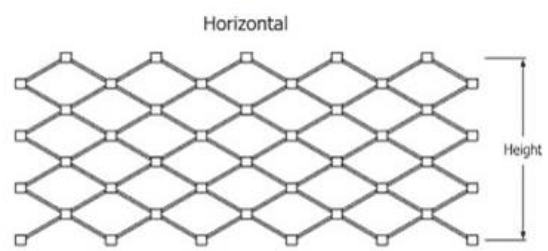
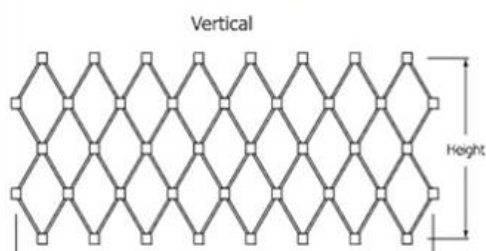
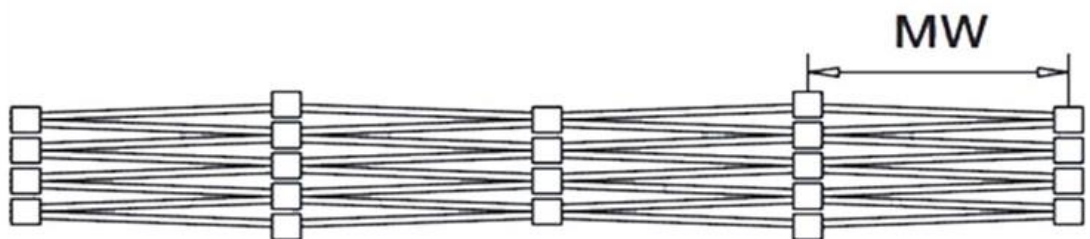
- Material: Stainless steel or Aluminum
- Aperture size: Customized
- Size: Customsized
- Rope Construction: 7X7 or 7X19



Construction 7 x 7



Construction 7 x 19



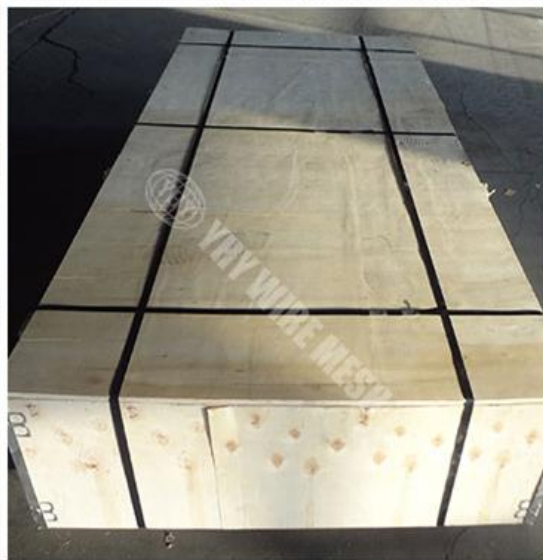
**Parameter table**

Code	Rope Construction	Rope Diameter		Opening Size		Breaking Force
		Inch	mm	Inch	mm	KN
<b>YHYWRM-01</b>	7 × 19	1/8	3.2	4.7" × 4.7"	120 × 120	7.38
<b>YHYWRM-02</b>	7 × 19	1/8	3.2	4" × 4"	102 × 102	7.38
<b>YHYWRM-03</b>	7 × 19	1/8	3.2	3.6" × 3.6"	90 × 90	7.38
<b>YHYWRM-04</b>	7 × 19	1/8	3.2	3" × 3"	76 × 76	7.38
<b>YHYWRM-05</b>	7 × 19	1/8	3.2	2" × 2"	51 × 51	7.38
<b>YHYWRM-06</b>	7 × 7	3/32	2.4	4" × 4"	102 × 102	4.18
<b>YHYWRM-07</b>	7 × 7	3/32	2.4	3.6" × 3.6"	90 × 90	4.18
<b>YHYWRM-08</b>	7 × 7	3/32	2.4	3" × 3"	76 × 76	4.18
<b>YHYWRM-09</b>	7 × 7	3/32	2.4	2.4" × 2.4"	60 × 60	4.18
<b>YHYWRM-10</b>	7 × 7	3/32	2.4	2" × 2"	51 × 51	4.18
<b>YHYWRM-11</b>	7 × 7	5/64	2	3" × 3"	76 × 76	3.17
<b>YHYWRM-12</b>	7 × 7	5/64	2	2.4" × 2.4"	60 × 60	3.17
<b>YHYWRM-13</b>	7 × 7	5/64	2	2" × 2"	51 × 51	3.17
<b>YHYWRM-14</b>	7 × 7	5/64	2	1.5" × 1.5"	38 × 38	3.17
<b>YHYWRM-15</b>	7 × 7	1/16	1.6	3" × 3"	76 × 76	2.17
<b>YHYWRM-16</b>	7 × 7	1/16	1.6	2" × 2"	51 × 51	2.17
<b>YHYWRM-17</b>	7 × 7	1/16	1.6	1.5" × 1.5"	38 × 38	2.17
<b>YHYWRM-18</b>	7 × 7	1/16	1.6	1.2" × 1.2"	30 × 30	2.17
<b>YHYWRM-19</b>	7 × 7	1/16	1.6	1" × 1"	25 × 25	2.17
<b>YHYWRM-20</b>	7 × 7	3/64	1.2	2" × 2"	51 × 51	1.22
<b>YHYWRM-21</b>	7 × 7	3/64	1.2	1.5" × 1.5"	38 × 38	1.22
<b>YHYWRM-22</b>	7 × 7	3/64	1.2	1.2" × 1.2"	30 × 30	1.22
<b>YHYWRM-23</b>	7 × 7	3/64	1.2	1" × 1"	25 × 25	1.22
<b>YHYWRM-24</b>	7 × 7	3/64	1.2	0.8" × 0.8"	20 × 20	1.22



## PACKING

Normal packing will be plastic film and then wooden case.  
Package and the label can be customized

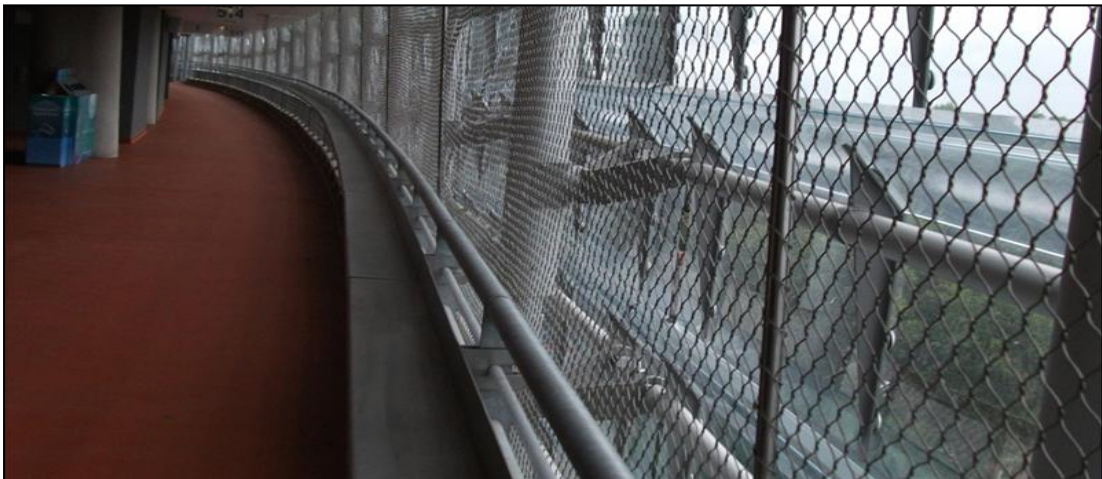


## PROJECT

Tees Transporter Bridge, Middlesbrough



Aviva Stadium, Lansdowne Road, Dublin



Gardens by the Bay



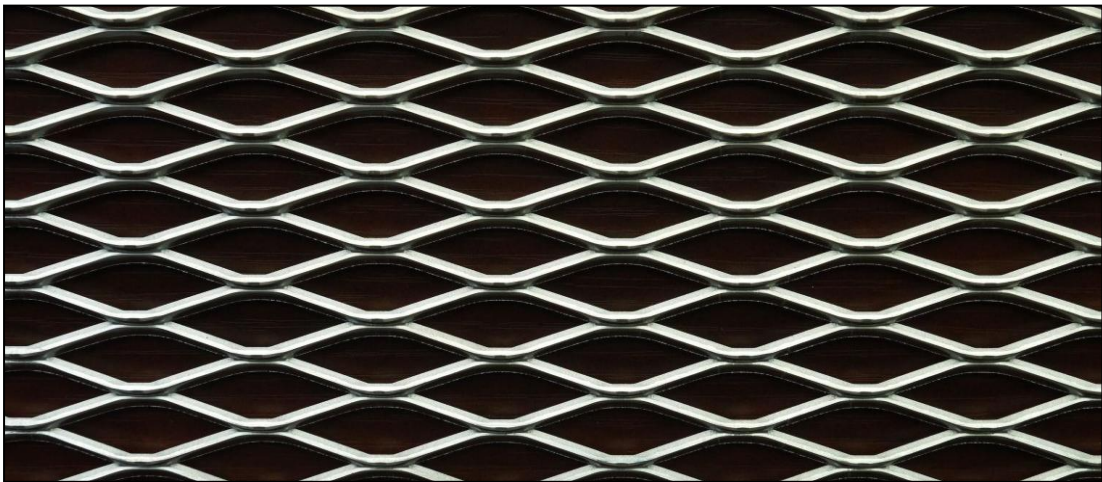


## RELATED PRODUCT

Perforated wire mesh



Expanded wire mesh



Stainless steel decorative wire mesh

